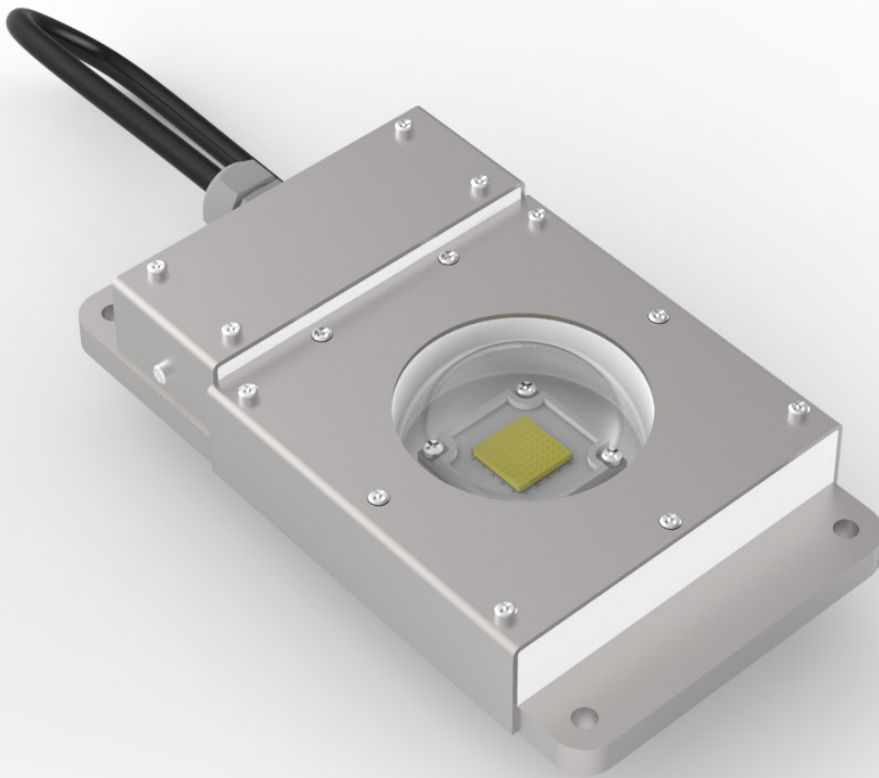
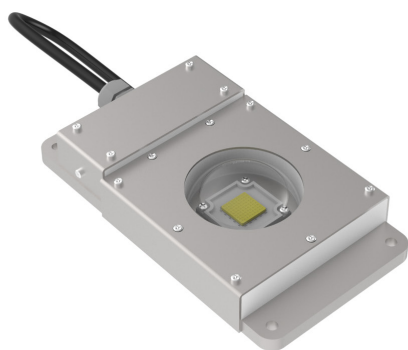


# next generation aquaculture illumination

high powered  
submersible  
LED module

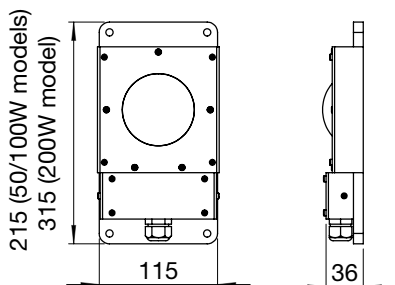




50W and 100W model



200W model



### High Powered LED Technology

Choice of LED power for a range of applications

### Flexible Mounting Options

Flat backed allowing for flexible installation to bulkheads, hulls, enclosure walls etc.

### Solid State Technology

Reduces the need for lamp maintenance

### Rugged Design

316 stainless steel construction with borosilicate glass optic lens.

### Intelligent Thermal Dimming Technology (optional)

Protects LED engine from thermal overload, maximising life of the unit

### Dimmable

Optional dimming control available.

### Power Options

12V or 24V DC options available. 100-260VAC version supplied with remote driver.

### Specifications

<b>Technology</b>	Light Emitting Diode
<b>LED Power</b>	50W, 100W, 200W (others on request)
<b>Voltage</b>	12 VDC, 24 VDC, 100 - 260 VAC 50/60Hz
<b>Power Factor</b>	0.95
<b>Life</b>	50,000 hours
<b>Luminous Flux</b>	5500lm, 11000lm, 22000lm

SLB-	Power		Colour		Voltage		Function	
	___	___	___	___	___	___	___	___
	50	50W	40	4000K	12	12 VDC	S	Standard
	100	100W	50	5000K	24	24 VDC	D	Dimming
	200	200W	60	6000K	AC	100-260 VAC		
			XX	Colour				

example: SLB-50.60.12.S

Panel light fitted to transom of motor yacht

**WARNING! Unit must only be operated when fully submerged!**